

DID YOU KNOW?

In general, any construction work in the protective shoreline strip is prohibited. However, some types of work may be authorized under certain conditions. Before starting any work, you will need to obtain a permit or a certificate of authorization from the City of Dorval. Prepare your documents and submit your application to the Urban Planning Department. Make sure you have your certificate of authorization in your possession before you start the work.



IMPORTANT NOTICE



The information provided in this leaflet is based on Zoning By-law RCM-60A-2015 of the City of Dorval and is published here for information purposes only. It does not replace the provisions contained in the official by-laws.

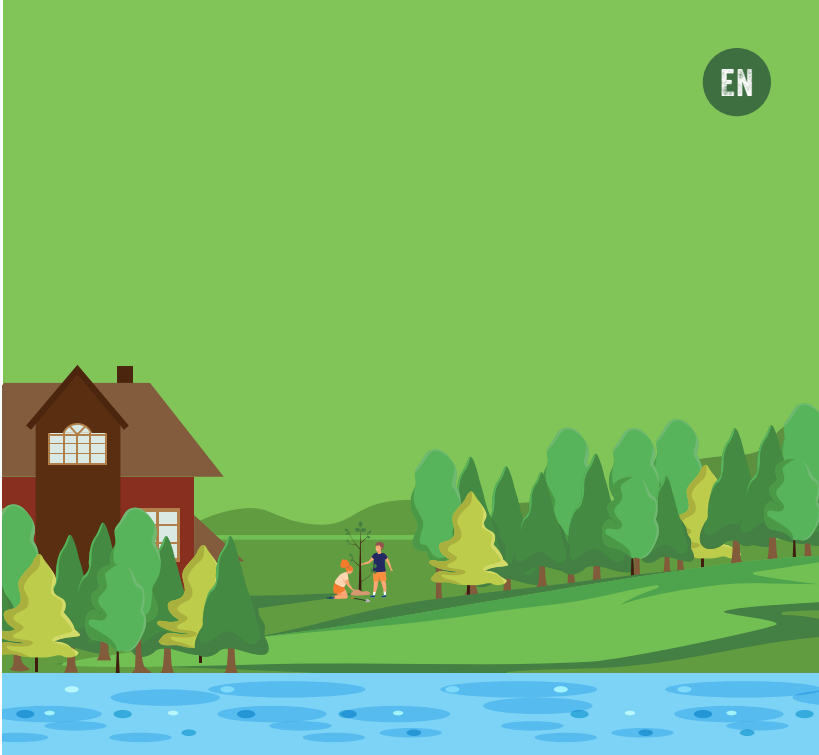
Further standards may apply to certain lots (corner lot, lots in flood zones, heritage zone, etc.) Please contact the Urban Planning Department for more information.



CONTACT US

Urban Planning
City Hall
60, Avenue Martin
Dorval (Québec) H9S 3R4

Phone : 514 633-4084
Email : permis@ville.dorval.qc.ca



PROTECTIVE SHORELINE STRIP

ANSWERS TO YOUR QUESTIONS !

DEFINITION



PROTECTIVE SHORELINE STRIP

A strip of natural vegetation bordering a watercourse. It constitutes a transition zone between the aquatic and the terrestrial environments.

WIDTH OF THE PROTECTIVE SHORELINE STRIP

The width of the protective shoreline strip is measured horizontally at the natural high-water line, following the slope of the lot.

> The width of the protected strip is minimum 10 metres (32' 10''):

- When the gradient is less than 30%;
- When the gradient is greater than 30% with an embankment higher than 5 m (16' 5'').

> The width of the protective strip is minimum 15 metres (49' 3''):

- When the gradient is constant and greater than 30%;
- When the gradient is greater than 30% with an embankment higher than 5 m (16' 5'').

LANDSCAPING OF THE PROTECTIVE SHORELINE STRIP

The simplest way is to allow nature to take over by not mowing the portion of your lot along the watercourse, thus allowing it to renaturalize. The other option is to plant a variety of indigenous plants, shrubs and trees adapted to shorelines.

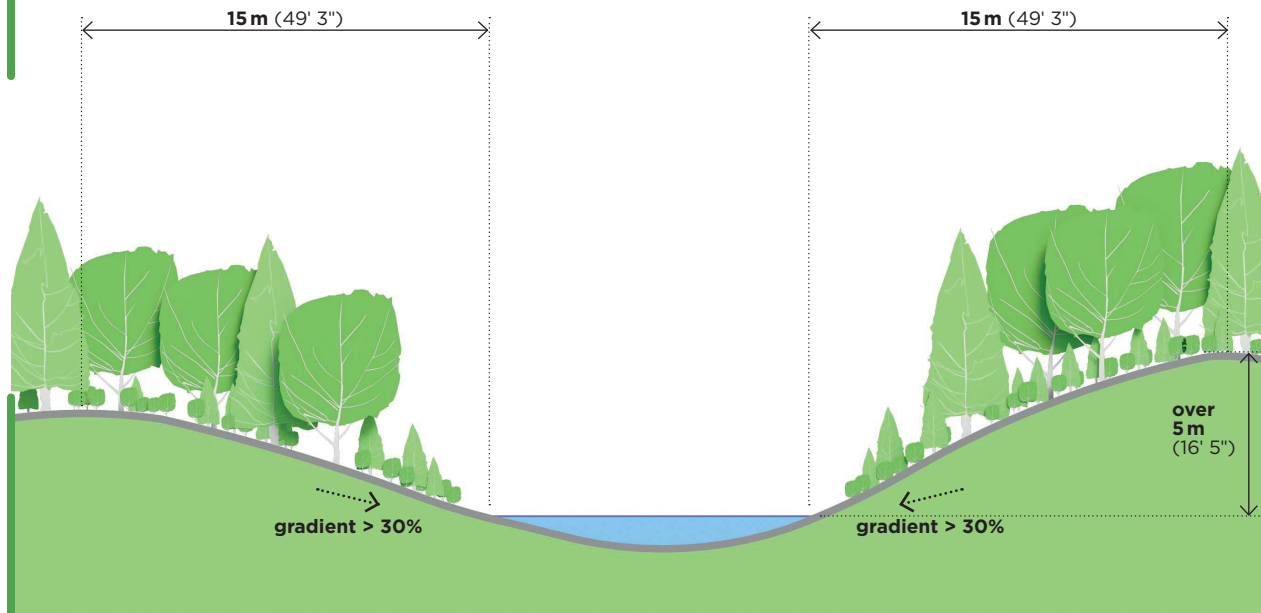
Make sure you use a staggered planting method, planting vegetation in a diamond pattern down the bank. A distance of about 1 m (3' 3'') between shrubs, and 4 m (13' 1'') to 5 m (16' 5'') between trees, is recommended.

CONSTRUCTION WORK THAT MAY BE AUTHORIZED IN A PROTECTIVE SHORELINE STRIP

Some work, as follows, may be authorized depending on certain conditions and by obtaining a permit or certificate of authorization:

- Maintenance, repair or demolition of an existing building;
- Construction or enlargement of a main building;
- Construction of an accessory building;
- Installation of a fence;
- Work associated with the vegetation (sanitation cutting, tree felling, tree pruning and removal of foliage to create an opening, planting of vegetation, etc.);
- Work to stabilize the bank.

Protective strip | minimum 15 m (49' 3'')



Protective strip | minimum 10 m (32' 10'')

